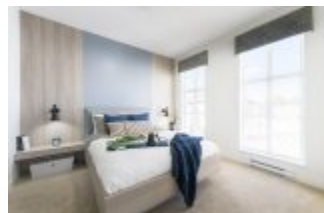


CREEKSIDE - SOLD OUT

<https://presalesbc.com>

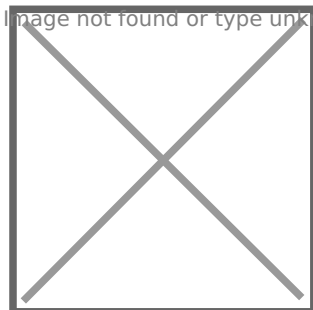
24076 112 Avenue,
Maple Ridge, BC,
Canada



Creekside is a new townhouse development by StreetSide Developments (British Columbia) at 24076 112 Avenue, Maple Ridge. The development was completed in 2019. Sales for available units range in price from \$549,900 to over \$629,900. Creekside has a total of 130 units. Sizes range from 1424 to 1714 square feet. On the banks of...

- 3 beds
- Townhouse
- Maple Ridge

Image not found or type unknown



BASIC FACTS

Property ID: 6302

Bedrooms: 3

Status: Sold Out

Number of Units: 130

Construction Status: Complete

Estimated Completion: Fall/Winter 2019

Architect(s): Bingham Hill Architects

Interior Designer(s): Portico Design Group

Sales Company: StreetSide Developments
(British Columbia)

Post Updated: 2022-03-09 09:38:17

Area: 1714 sq ft

Type: Townhouse

Selling Status: Sold Out

Construction Start: 2019

Builder(s): StreetSide Developments (British
Columbia)

Ceilings: From 9'0" to 14'0"

Marketing Company: StreetSide
Developments (British Columbia)

- 5-Year Building Envelope Warranty
- Modern wood laminate cabinetry
- Oversized ceramic
- Soft close doors