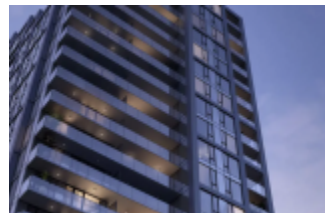


THE KEARY

<https://presalesbc.com>

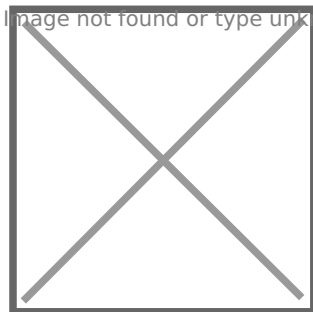
230 Keary Street,
New Westminster,
BC, Canada



The Keary is a new condo development by Wesgroup at 230 Keary Street, New Westminster. The Keary has a total of 292 units. Smart design meets modern, effortless living The Keary marks the final phase of Wesgroup's vision of a vibrant, master-planned community. A design envisioned for the next generation of Brewery District residents, is...

- Condo
- New Westminster
- Sold Out

Image not found or type unknown



BASIC FACTS

Property ID: 18198

Status: Sold Out

Number of Units: 292

Sales Start: Winter/Spring 2022

Builder(s): Wesgroup

Post Updated: 2023-05-01 12:55:17

Type: Condo

Number of Stories: 30

Construction Start: Complete

Architect(s): Chris Dikeakos Architects Inc.